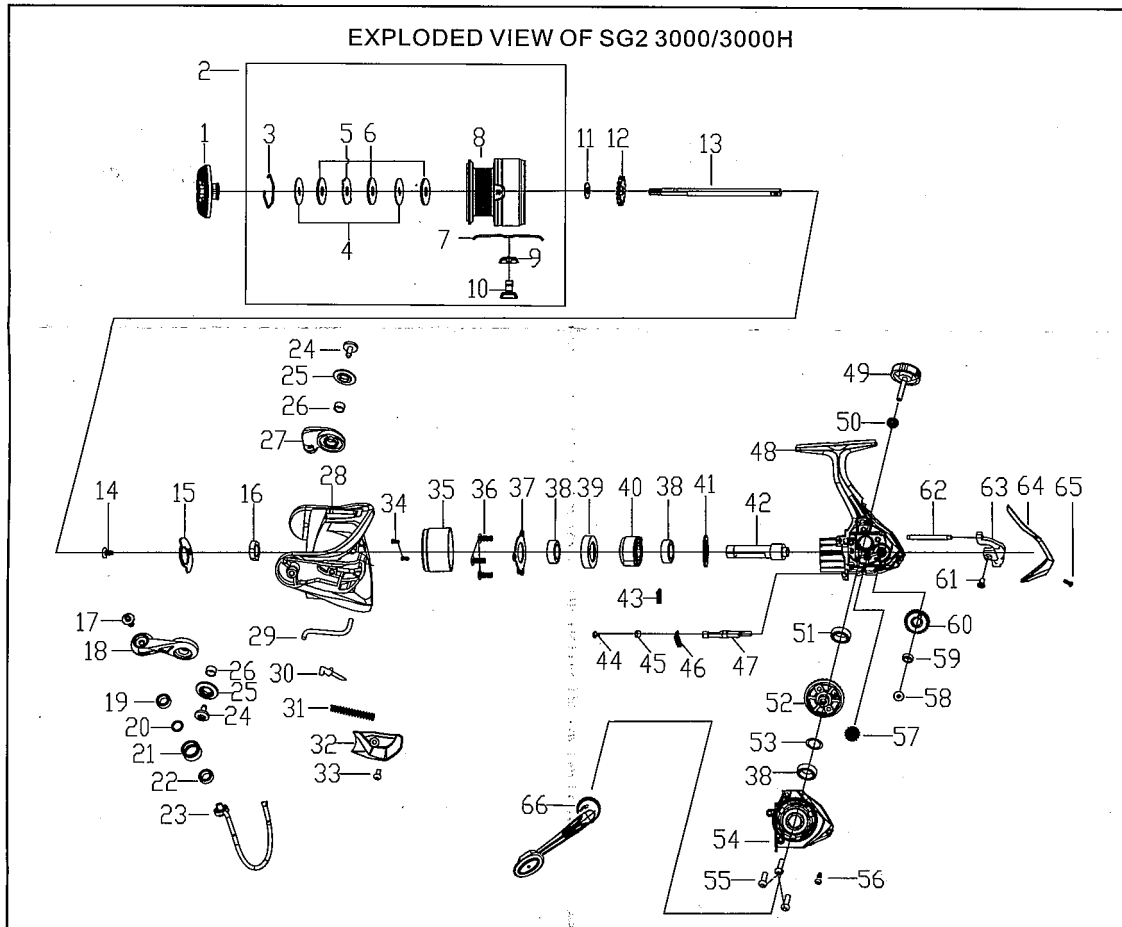


# SAVAGE

GEAR *it's a savage world*



EXPLODED VIEW OF SG2 3000/3000H

ITEM	PARTS DESCRIPTION	ITEM	PARTS DESCRIPTION	ITEM	PARTS DESCRIPTION
1	Drag Knob Assembly	23	Bail Assembly	45	Pom Bushing
2	Spool Assembly	24	Screw(2pcs)	46	Clutch Switch Spring
3	Washer Retaining Ring	25	Screw Cap(2pcs)	47	Clutch Switch
4	Keyed Washer(2pcs)	26	Bushing(2pcs)	48	Body Assembly
5	Ear Washer	27	Bail Holder	49	Handle Cap
6	Washer(3pcs)	28	Rotor	50	Washer
7	Spring	29	Rotor Trip Lever	51	Bearing
8	Spool	30	Pivot Arm	52	Driver Gear
9	Line Clip Pad	31	Spring	53	Washer
10	Line Clip	32	Bail Arm Cover	54	Body Cover Assembly
11	Spool Adjust Washer	33	Screw	55	Screw(3pcs)
12	Click Gear	34	Screw(2pcs)	56	Screw
13	Main Shaft	35	Body Head Cover	57	Reduction Gear
14	Screw	36	Screw(3pcs)	58	Screw
15	Rotor Nut Set Plate	37	Ball Bearing Retainer	59	Bushing
16	Rotor Nut	38	Bearing(3pcs)	60	Oscillation Gear
17	Screw	39	Bearing Holder	61	Screw
18	Bail Arm	40	Clutch Assembly	62	Slider Guide Shaft
19	Bushing	41	Washer	63	Slider
20	Washer	42	Pinion	64	Body Rear Cover
21	Line Roller	43	Clutch Spring	65	Screw
22	Bearing	44	Screw	66	Handle Assembly

